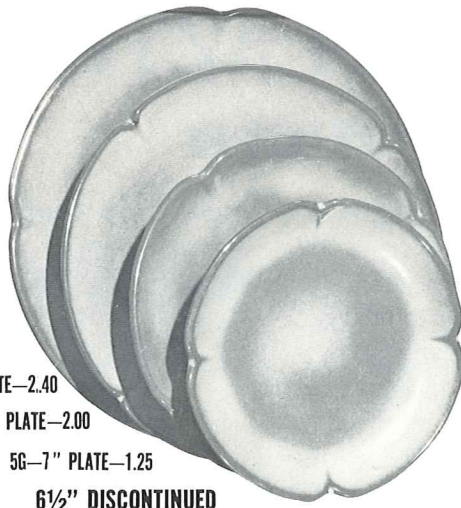




\*5V—2 QT. BAKER—4.50



5F—10" PLATE—2.40

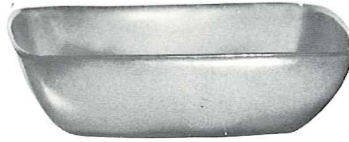
5FS—9" PLATE—2.00

5G—7" PLATE—1.25

6½" DISCONTINUED



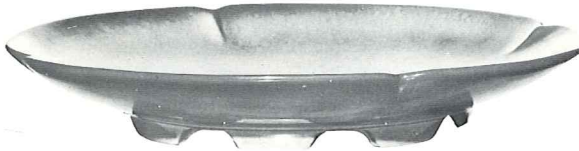
\*5W—3 QT. BAKER—6.00



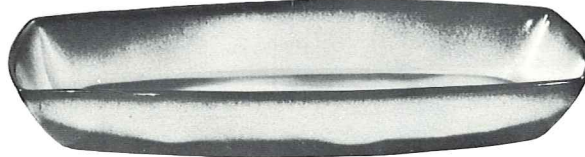
\*5NS—9" VEGETABLE—2.50



\*5N—4½ QT. BOWL—7.50



5FC—15" CHOP PLATE—10.00



5P—17" PLATTER—7.50

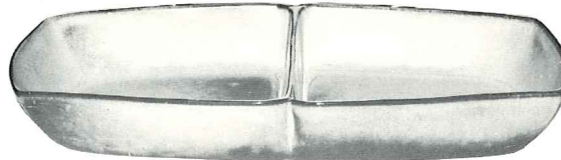
5Q—13" PLATTER—3.50



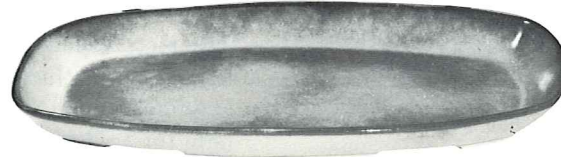
5XL—20 OZ. BOWL—1.50

5X—14 OZ. CEREAL—1.25

5XS—9 OZ. FRUIT—1.00



5QD—13" DIVIDED BOWL—3.50



\*5QS—13" PLATTER—2.40

\*5PS—9" TRAY—1.50



\*5ND—9" CHEESE DIP—3.50



\*5T—6 CUP TEAPOT—3.50



5M—16 OZ. MUG—1.60



\*5DC—DEMITASSE CUP—1.00

\*5DE—DEMITASSE SAUCER—1.00



\*5A—12 OZ. CREAMER—1.50



\*5CL—12 OZ. MUG—1.40

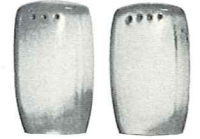


\*5B—SUGAR WITH LID—2.00



5C—CUP—1.20

5E—5½" SAUCER—1.00



\*5HS—SALT & PEPPER—2.00



\*5L—12 OZ. TUMBLER—1.20



\*5LC—6 OZ. JUICE—1.00



\*5DB—6 OZ. SUGAR—1.00



\*5DA—6 OZ. CREAMER—1.00



5TL—12 CUP TEAPOT—5.00



5S—20 OZ. GRAVY BOAT—2.50



5D—3 QT. PITCHER—5.00

THIS PAGE AVAILABLE IN BROWN SATIN, DESERT GOLD, PRAIRIE GREEN & WOODLAND MOSS, EXCEPT WHERE NOTED\*.

\* AVAILABLE IN ALL COLORS—ADD 50% FOR FLAME

SIZES ARE APPROXIMATE AND MAY VARY SLIGHTLY.